



Project:

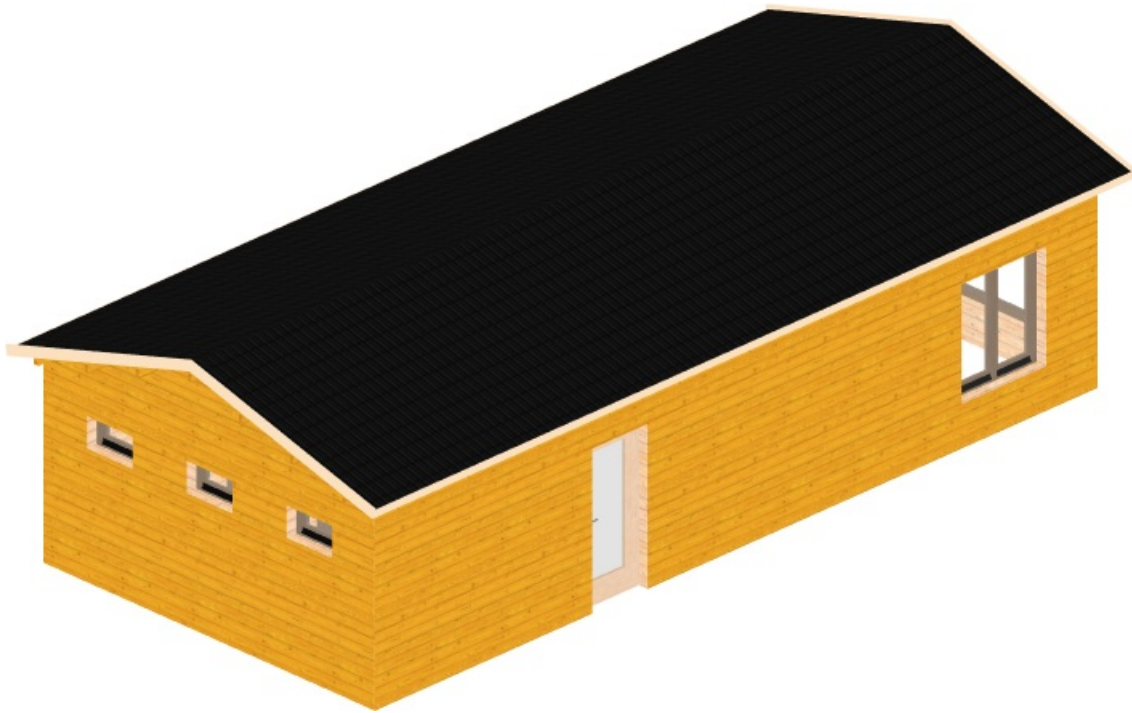
#S-13312 - KRINI 55m2

Author:

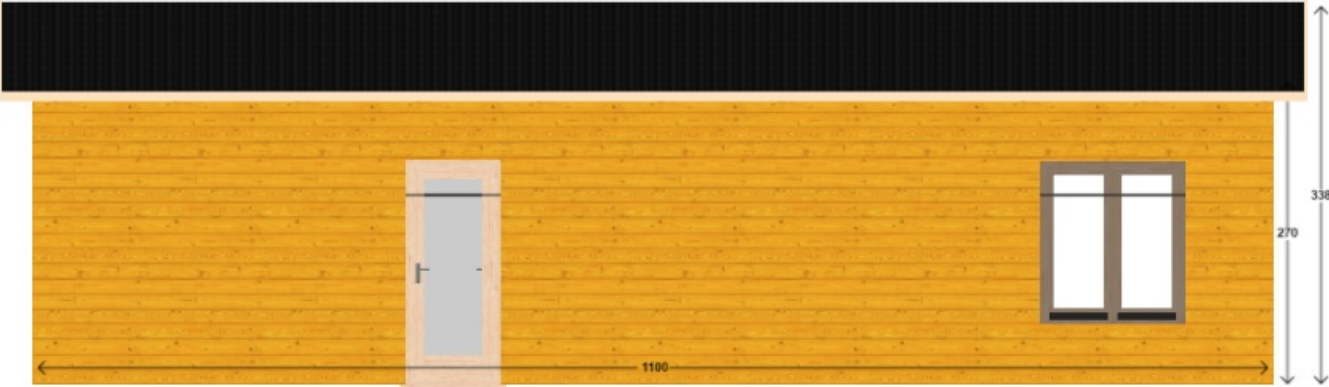
OikosDecor

Date:

2020-12-09 10:50:18



Front view



Back view



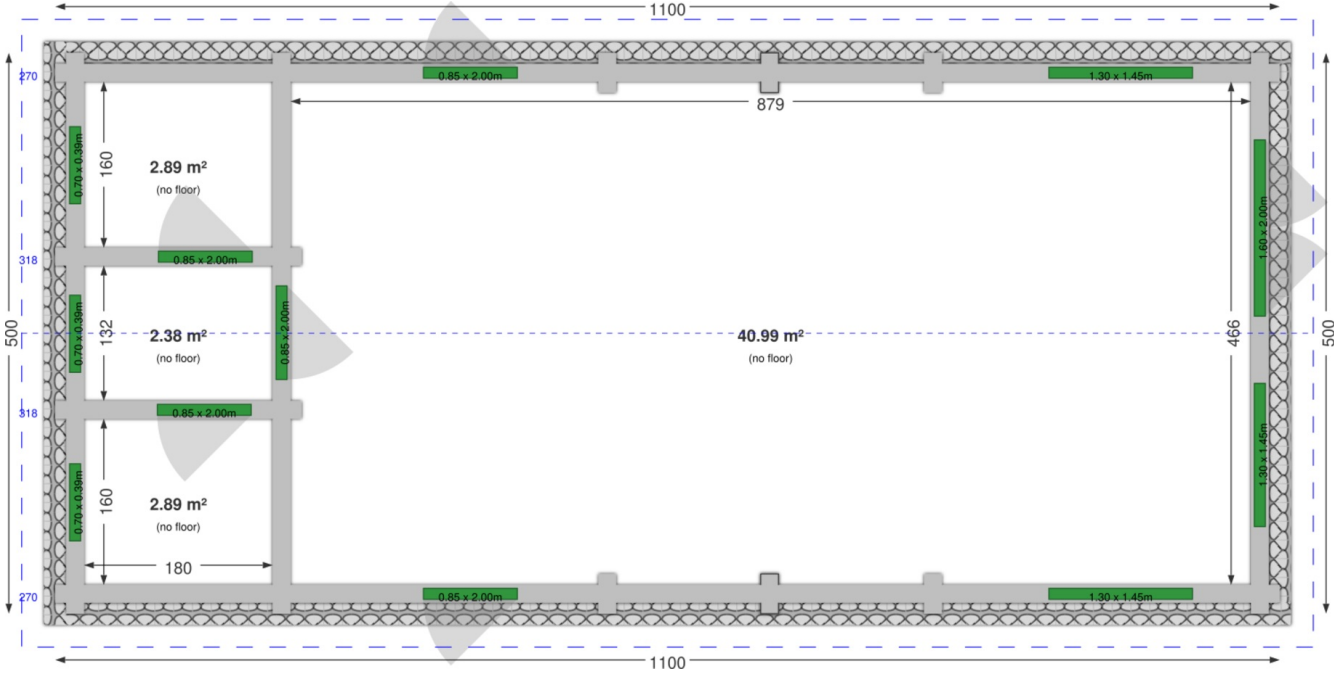
Left view



Right view



Top view



Virtual 3D view



Front view



Back view



Left view



Right view



Dimensions	
External size	1099.8 x 499.8 cm
Internal size	1073 x 473 cm
Wall thickness	6.8 cm

Surfaces	
Floor	49.15 m ²
Roof	69.32 m ²

Heights	
Highest wall	270 cm
Lowest wall	270 cm
Maximum roof ridge	318 cm

Doors	
double_door (1.60 x 2.00m)	1
door (0.85 x 2.00m)	1
door (0.85 x 2.00m)	2
door (0.85 x 2.00m)	2

Windows	
double_window (1.30 x 1.45m)	3
window (0.70 x 0.39m)	3

	Quantity	Unit price	Price
Cabin			
		-	10,419.09
Walls			
Insulation 100mm	87.9 m2	58.80	5,168.52
Impregnation - PINE	1		2,627.63
Elements			
Door, double glass, Premium, d5 (1.60 x 2.00m)	1	518.00	518.00
Window, double glass, Premium, w4 (1.30 x 1.45m)	3	411.60	1,234.80
Door, double glass, Premium, d2 (0.85 x 2.00m)	1	308.00	308.00
Door, Premium, d1 (0.85 x 2.00m)	2	308.00	616.00
Window, double glass, Premium, w6a (0.70 x 0.39m)	3	140.00	420.00
Door, double glass, Premium, d3 (0.85 x 2.00m)	2	308.00	616.00
Floor			
Ground: floor bearers 68x60	49.15 m2		90.83
Roof			
Roof boards 19mm	69.32 m2	21.84	1,513.95
Covering: metal - BLACK	69.32 m2		2,122.01
		Total price	EUR 25,654.83

Order confirmation

Date: ____ - ____ - ____

Customer name: _____

Signature: _____