

pdfelement

Project:

OIKOS LEDRA 40m2

Author:

OIKOSDECOR

Date:

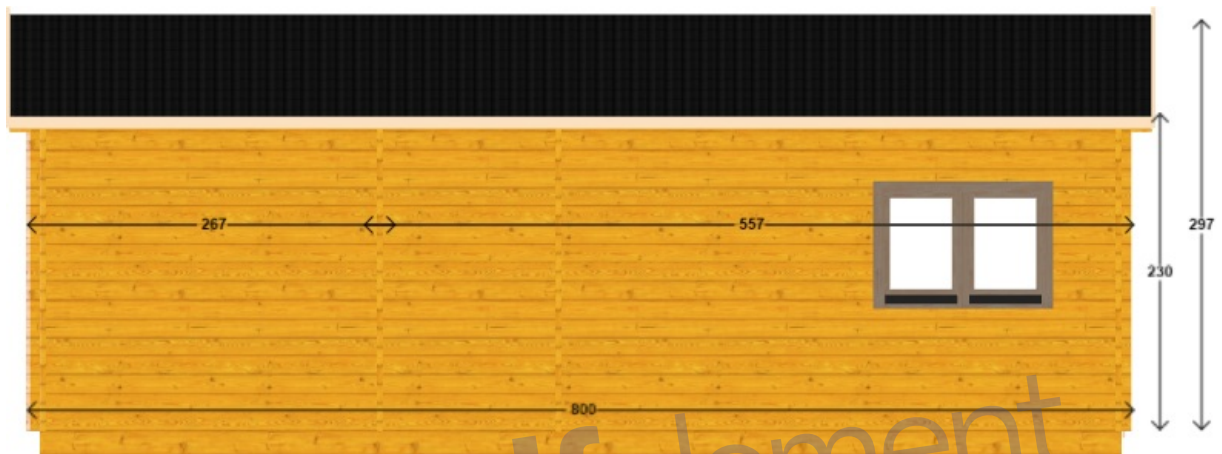


 pdfelement

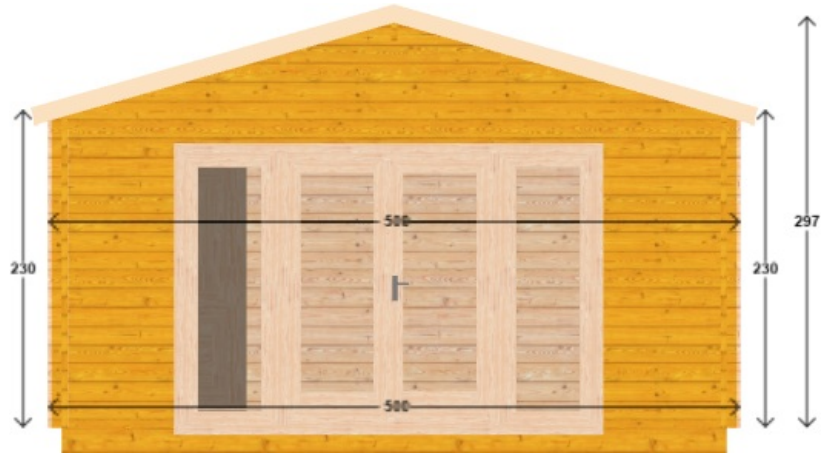
Front view



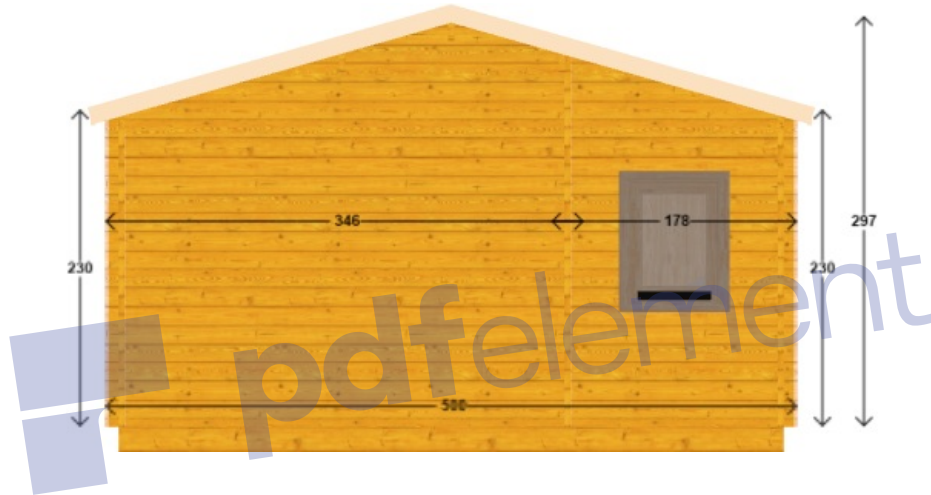
Back view



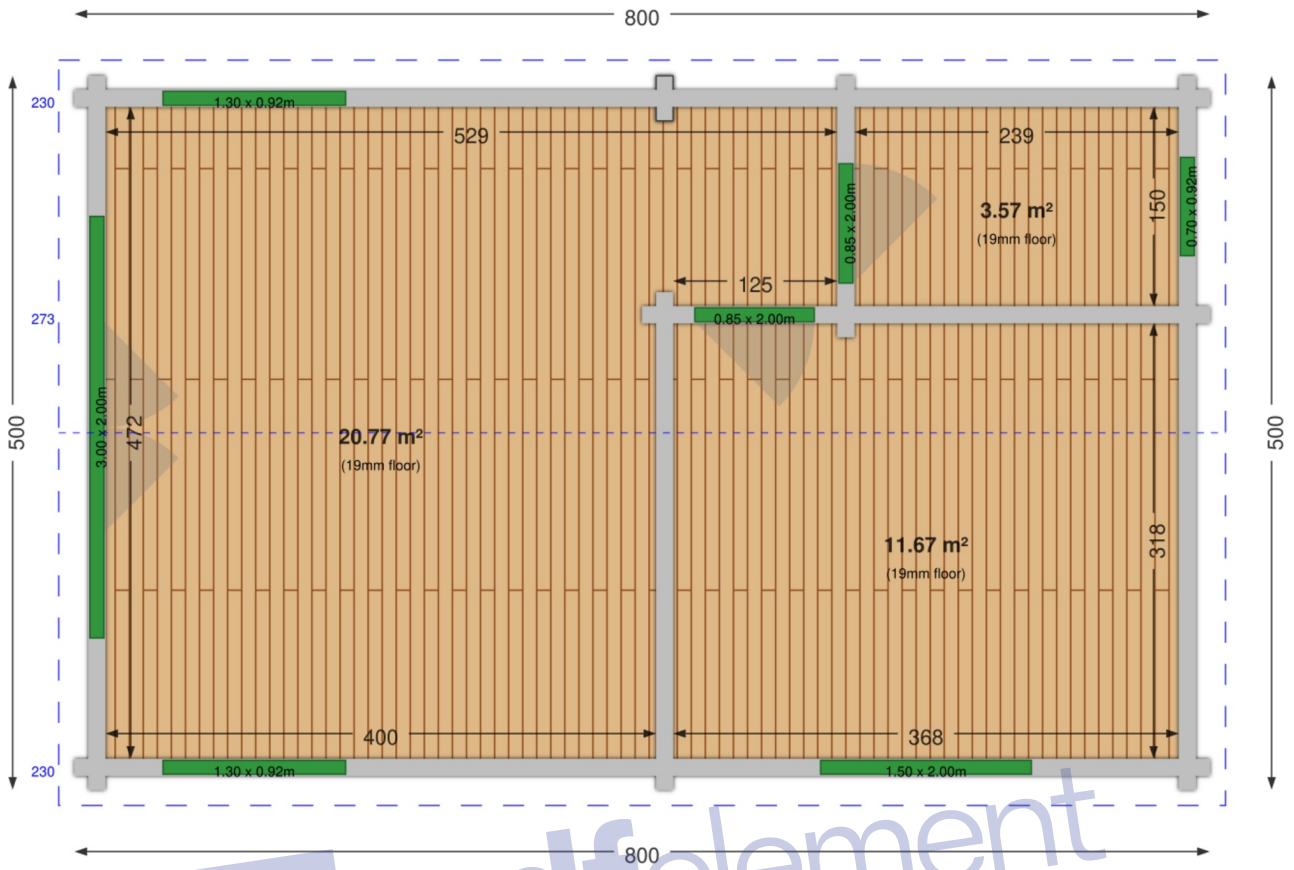
Left view



Right view



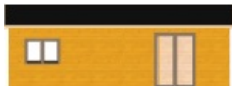
Top view



Virtual 3D view



Front view



Back view



Left view



Right view



| Dimensions | |
|-------------------------------|----------------------|
| External size | 800.4 x 500.4 cm |
| Internal size | 776 x 476 cm |
| Wall thickness | 4.4 cm |
| Surfaces | |
| Floor | 36.01 m ² |
| Roof | 45.78 m ² |
| Heights | |
| Highest wall | 229.5 cm |
| Lowest wall | 230 cm |
| Maximum roof ridge | 273 cm |
| Doors | |
| door (0.85 x 2.00m) | 2 |
| quadruple_door (3.00 x 2.00m) | 1 |
| Windows | |
| window (0.70 x 0.92m) | 1 |
| double_window (1.30 x 0.92m) | 2 |
| double_window (1.50 x 2.00m) | 1 |

| | Quantity | Unit price | Price |
|--|----------|------------|-------|
| Walls | | | |
| Impregnation - PINE | 1 | | |
| Elements | | | |
| Door, Premium, d1 (0.85 x 2.00m) | 2 | | |
| Window, double glass, Premium, w1 (0.70 x 0.92m) | 1 | | |
| Window, double glass, Premium, w2 (1.30 x 0.92m) | 2 | | |
| Window, double glass, Premium, w5 (1.50 x 2.00m) | 1 | | |
| Door, double glass, Premium, d8 (3.00 x 2.00m) | 1 | | |
| Floor | | | |
| Ground: floor boards 19mm | 36.01 m2 | | |
| Ground: floor bearers 44x60 | 36.01 m2 | | |
| Roof | | | |
| Roof boards 19mm | 45.78 m2 | | |
| Covering: metal - BLACK | 45.78 m2 | | |



Order confirmation

Date: ____ - ____ - ____

Customer name: _____

Signature: _____

